





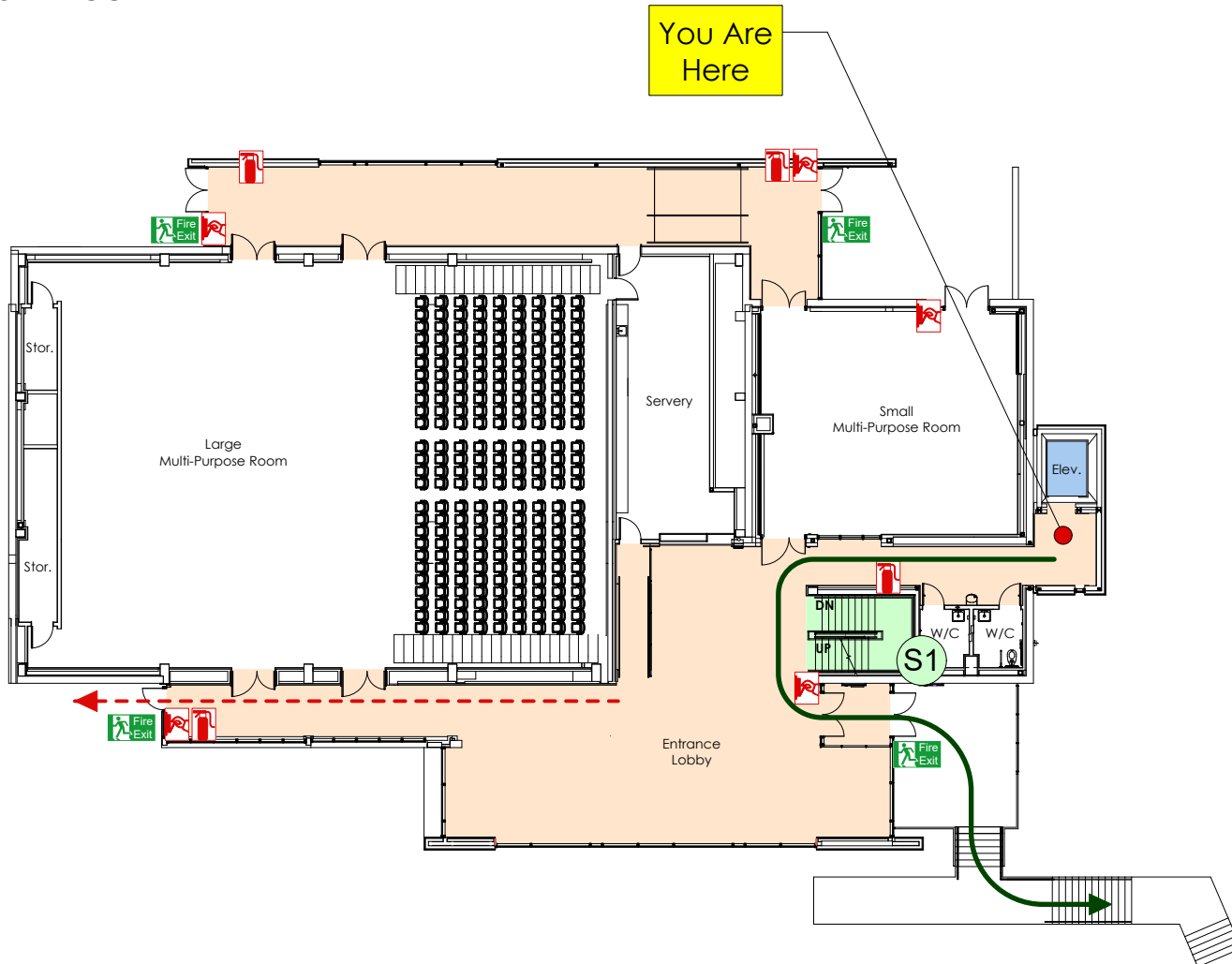
The Dogwood Auditorium  
(Building #25)  
2005 Sooke Road, Colwood, BC

## Main Floor



### Legend

-  Fire Extinguisher
-  Fire Alarm Pull Station
-  Fire Exit
-  Primary Exit Route
-  Secondary Exit Route



## Emergency Procedures

### IF YOU HEAR A FIRE ALARM...

EVACUATE via the nearest safe exit.  
ASSEMBLE clear of building at the designated ASSEMBLY AREA (as shown on map)  
STAY CLEAR of arriving fire equipment.  
DO NOT re-enter building until cleared by fire dept.

### IF YOU DISCOVER A FIRE...

ACTIVATE the nearest fire alarm pull station.  
EVACUATE via the nearest safe exit.  
CALL **911** to report fire at: **2005 Sooke Rd.**  
**(Building #25)**  
PROCEED to main entrance & report to fire dept.

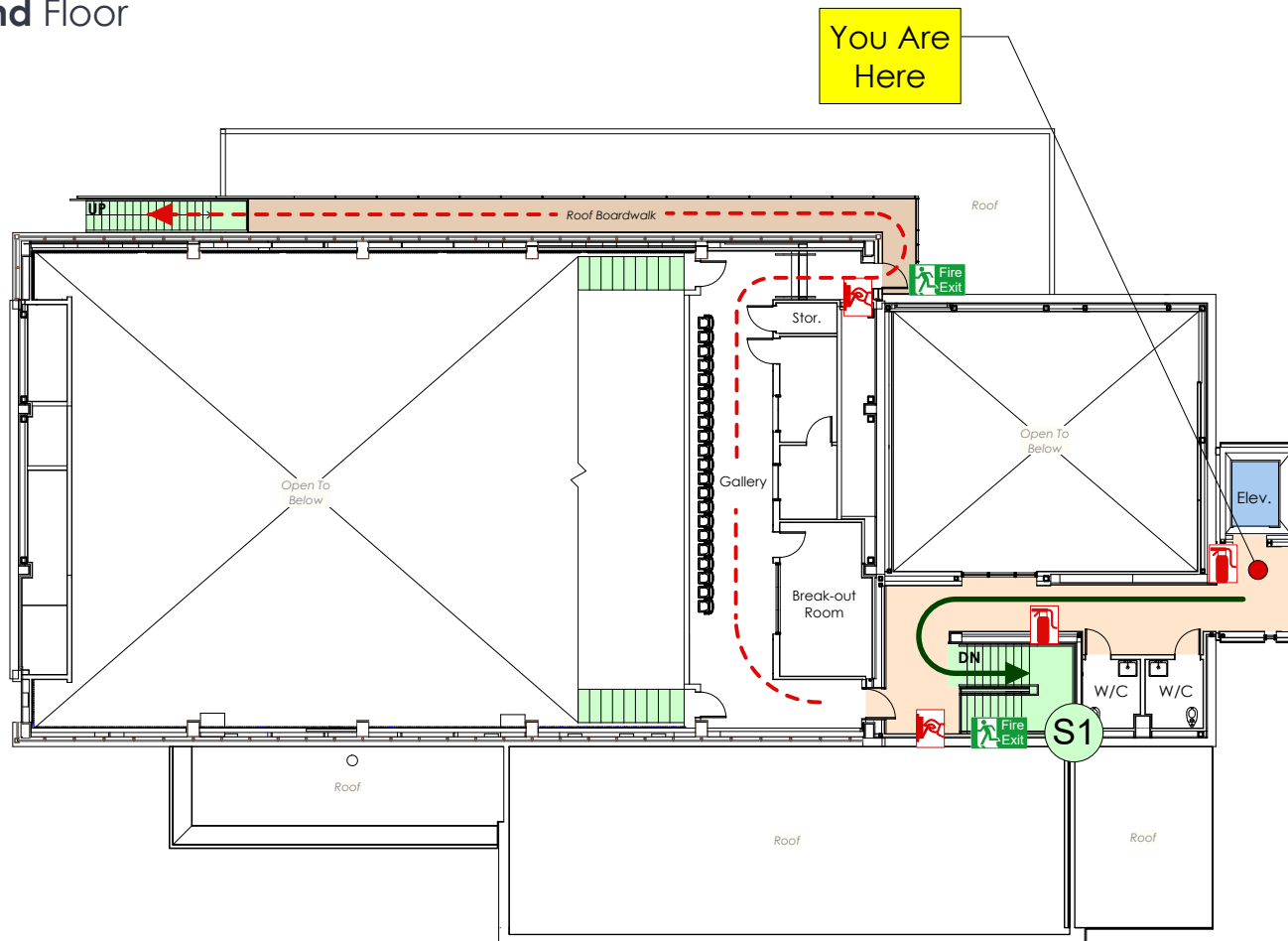
### IF AN EARTHQUAKE OCCURS...

TAKE COVER under nearest table/desk.  
Hold onto your shelter.  
SEEK PROTECTION from glass areas.  
WATCH for falling objects.  
If indoors, stay inside.  
DO NOT evacuate until shaking stops.


### Assembly Area: P7



## 2nd Floor



### Legend

-  Fire Extinguisher
-  Fire Alarm Pull Station
-  Fire Exit
-  Primary Exit Route
-  Secondary Exit Route

### Emergency Procedures

#### IF YOU HEAR A FIRE ALARM...

EVACUATE via the nearest safe exit.  
ASSEMBLE clear of building at the designated ASSEMBLY AREA (as shown on map)  
STAY CLEAR of arriving fire equipment.  
DO NOT re-enter building until cleared by fire dept.

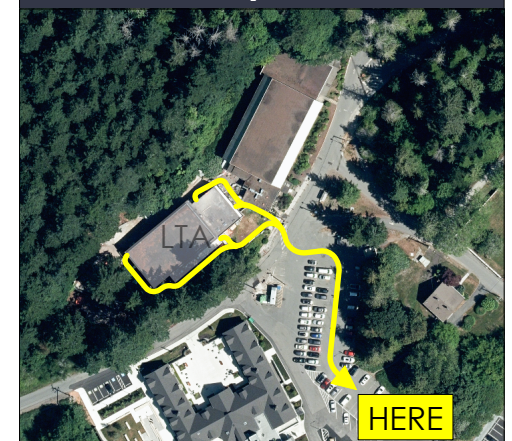
#### IF YOU DISCOVER A FIRE...

ACTIVATE the nearest fire alarm pull station.  
EVACUATE via the nearest safe exit.  
CALL **911** to report fire at: **2005 Sooke Rd.**  
**(Building #25)**  
PROCEED to main entrance & report to fire dept.

#### IF AN EARTHQUAKE OCCURS...

TAKE COVER under nearest table/desk.  
Hold onto your shelter.  
SEEK PROTECTION from glass areas.  
WATCH for falling objects.  
If indoors, stay inside.  
DO NOT evacuate until shaking stops.

#### Assembly Area: P7





The Dogwood Auditorium  
(Building #25)

2005 Sooke Road, Colwood, BC

## Basement Floor



### Legend

-  Fire Extinguisher
-  Fire Alarm Pull Station
-  Fire Exit
-  Primary Exit Route
-  Secondary Exit Route

### Emergency Procedures

#### IF YOU HEAR A FIRE ALARM...

EVACUATE via the nearest safe exit.  
ASSEMBLE clear of building at the designated ASSEMBLY AREA (as shown on map)  
STAY CLEAR of arriving fire equipment.  
DO NOT re-enter building until cleared by fire dept.

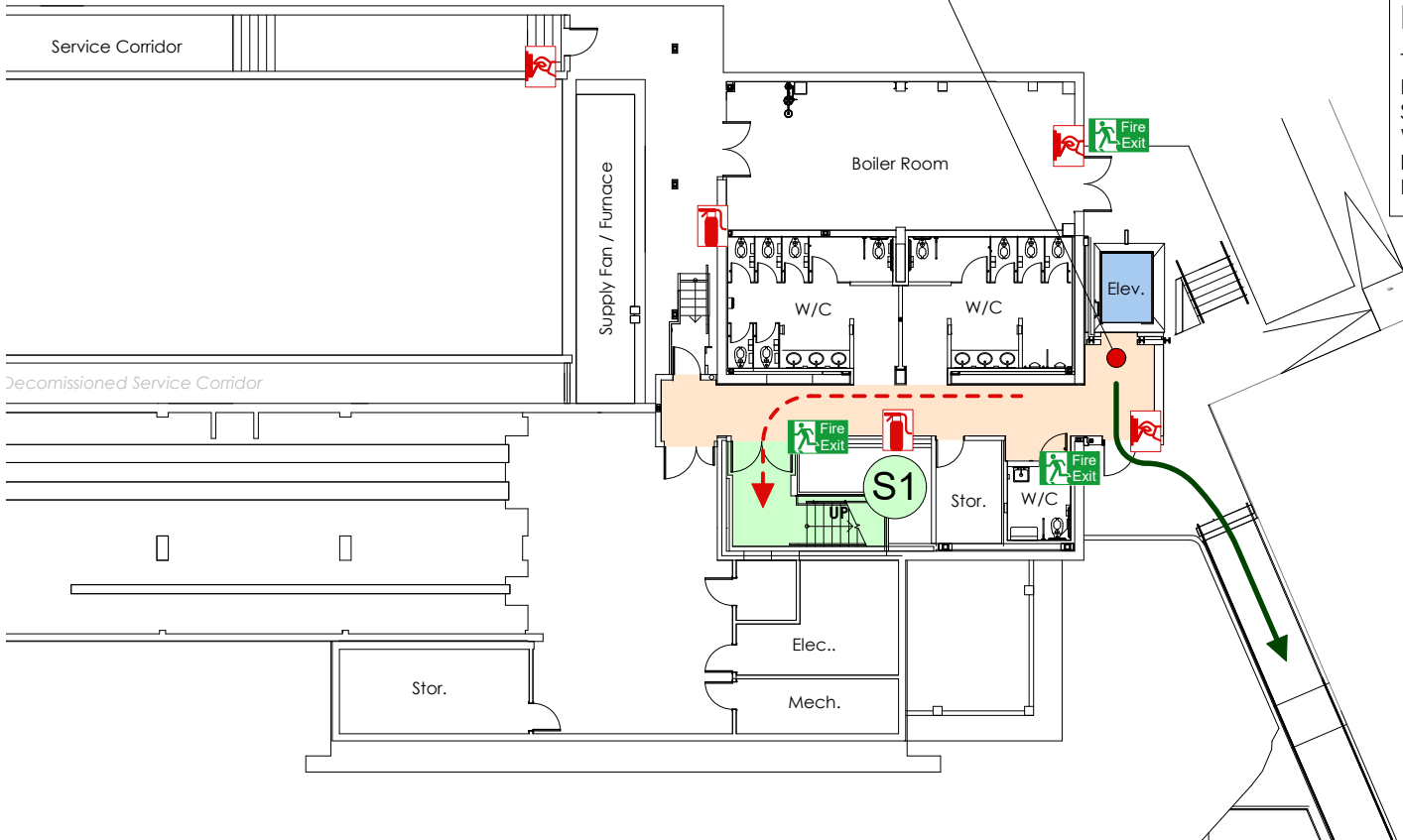
#### IF YOU DISCOVER A FIRE...

ACTIVATE the nearest fire alarm pull station.  
EVACUATE via the nearest safe exit.  
CALL **911** to report fire at: **2005 Sooke Rd.**  
**(Building #25)**  
PROCEED to main entrance & report to fire dept.

#### IF AN EARTHQUAKE OCCURS...

TAKE COVER under nearest table/desk.  
Hold onto your shelter.  
SEEK PROTECTION from glass areas.  
WATCH for falling objects.  
If indoors, stay inside.  
DO NOT evacuate until shaking stops.

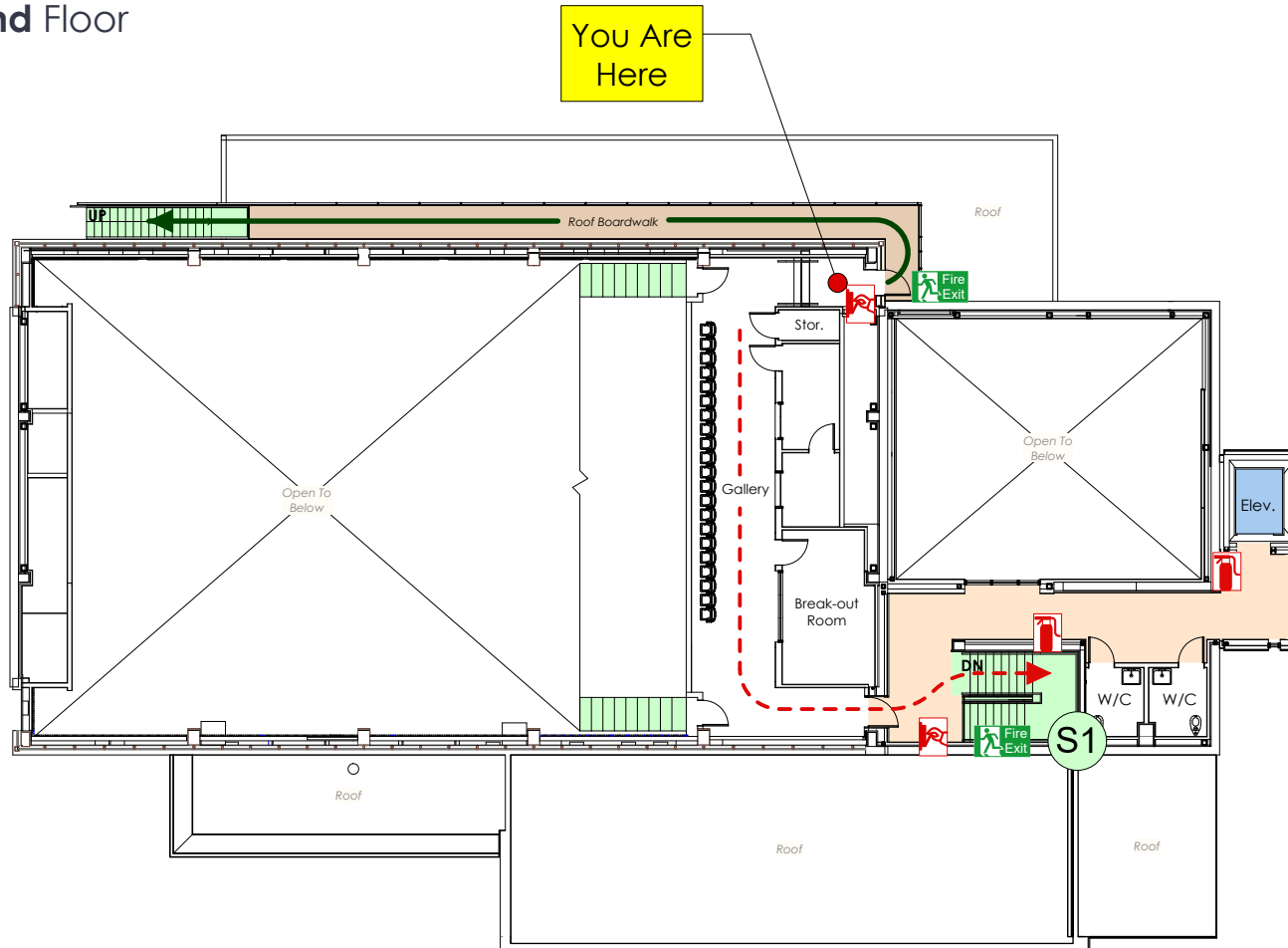
You Are Here



### Assembly Area: P7



## 2nd Floor



### Legend

-  Fire Extinguisher
-  Fire Alarm Pull Station
-  Fire Exit
-  Primary Exit Route
-  Secondary Exit Route

### Emergency Procedures

#### IF YOU HEAR A FIRE ALARM...

EVACUATE via the nearest safe exit.  
ASSEMBLE clear of building at the designated ASSEMBLY AREA (as shown on map)  
STAY CLEAR of arriving fire equipment.  
DO NOT re-enter building until cleared by fire dept.

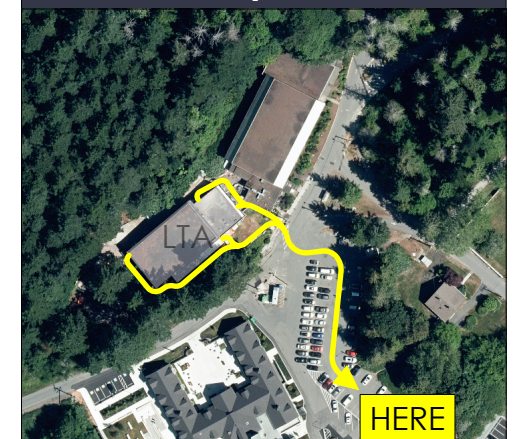
#### IF YOU DISCOVER A FIRE...

ACTIVATE the nearest fire alarm pull station.  
EVACUATE via the nearest safe exit.  
CALL **911** to report fire at: **2005 Sooke Rd.**  
**(Building #25)**  
PROCEED to main entrance & report to fire dept.

#### IF AN EARTHQUAKE OCCURS...

TAKE COVER under nearest table/desk.  
Hold onto your shelter.  
SEEK PROTECTION from glass areas.  
WATCH for falling objects.  
If indoors, stay inside.  
DO NOT evacuate until shaking stops.

#### Assembly Area: P7







The Dogwood Auditorium  
(Building #25)  
2005 Sooke Road, Colwood, BC

## Basement Floor



### Legend

-  Fire Extinguisher
-  Fire Alarm Pull Station
-  Fire Exit
-  Primary Exit Route
-  Secondary Exit Route

### Emergency Procedures

#### IF YOU HEAR A FIRE ALARM...

EVACUATE via the nearest safe exit.  
ASSEMBLE clear of building at the designated ASSEMBLY AREA (as shown on map)  
STAY CLEAR of arriving fire equipment.  
DO NOT re-enter building until cleared by fire dept.

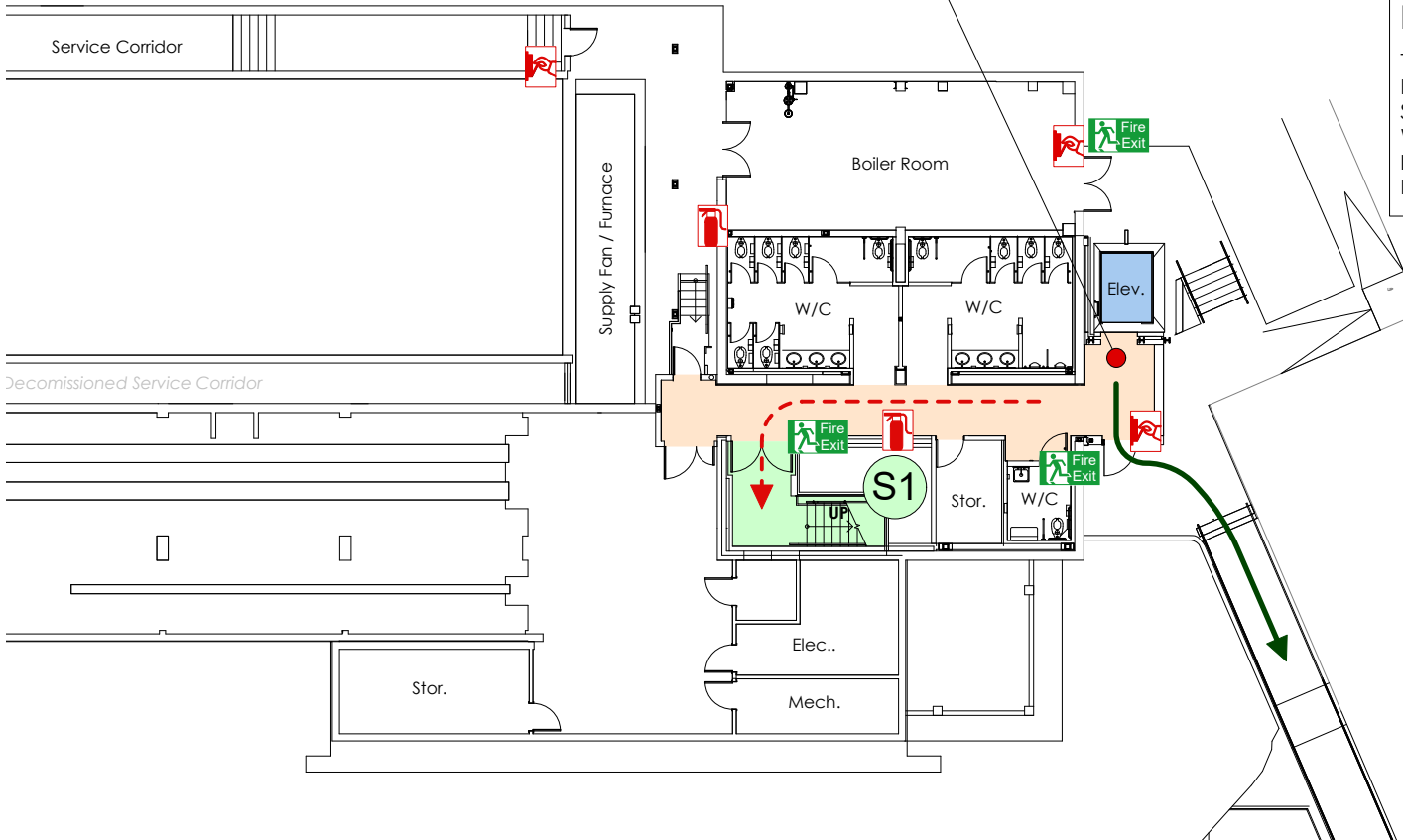
#### IF YOU DISCOVER A FIRE...

ACTIVATE the nearest fire alarm pull station.  
EVACUATE via the nearest safe exit.  
CALL **911** to report fire at: **2005 Sooke Rd. (Building #25)**  
PROCEED to main entrance & report to fire dept.

#### IF AN EARTHQUAKE OCCURS...

TAKE COVER under nearest table/desk.  
Hold onto your shelter.  
SEEK PROTECTION from glass areas.  
WATCH for falling objects.  
If indoors, stay inside.  
DO NOT evacuate until shaking stops.

You Are Here



### Assembly Area: P7

